



MARUTI SUZUKI GENUINE ACCESSORIES

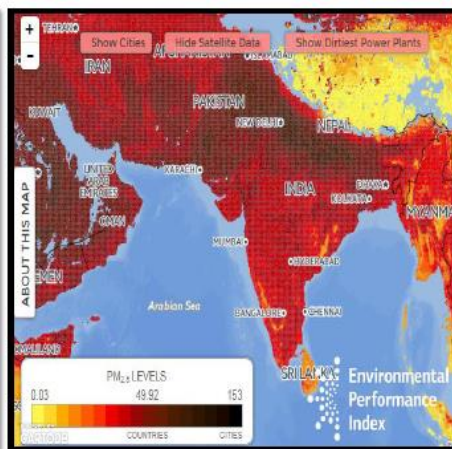
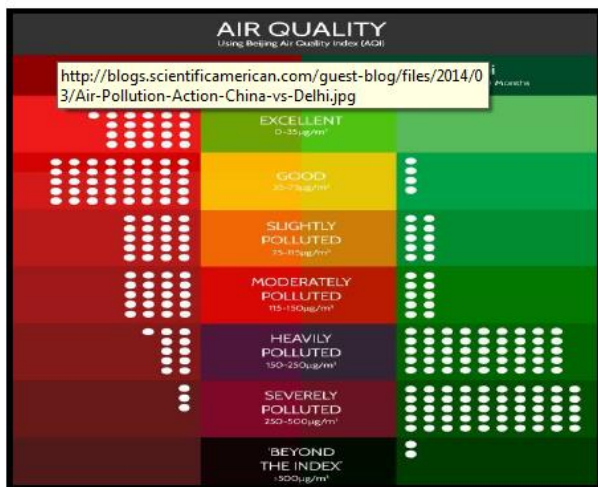
MSGA Bulletin no. 16/19

Dated: 24-10-2019

Subject: Introduction of PM2.5 Cabin Air Filter for New Swift, New Dzire, Baleno, New Ertiga, XL6 under Maruti Suzuki Genuine Accessories.

WHY PM2.5 Cabin Air Filter?

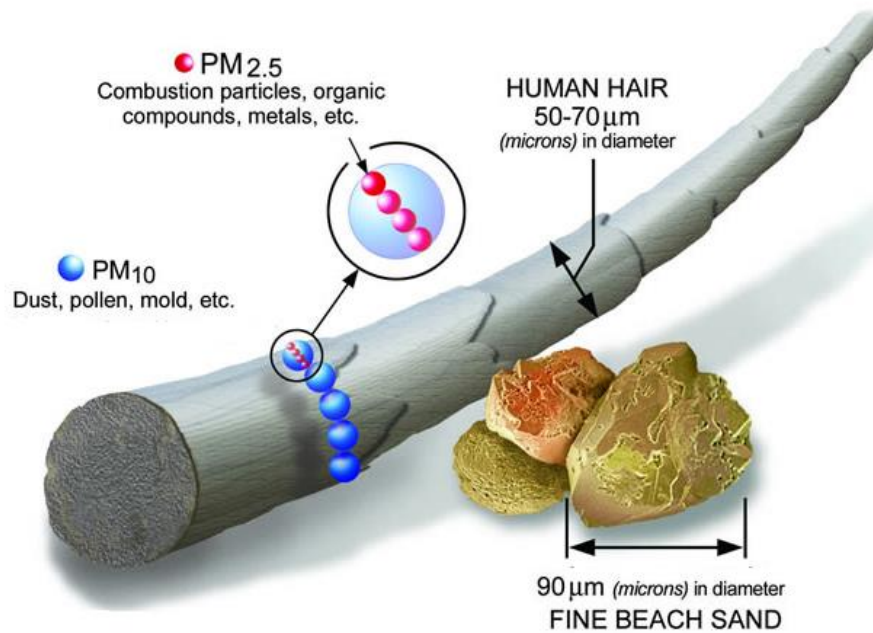
- Air pollution is a growing concern for India
- According to a World Health Organization (WHO) study, Delhi has surpassed Beijing & is currently world's most polluted city.
- According to a World Health Organization ranking that measures air quality, 13 of the 25 cities worldwide with the highest concentration of particulate matter are in India.



WHY PM 2.5 Filter is required for your Car:

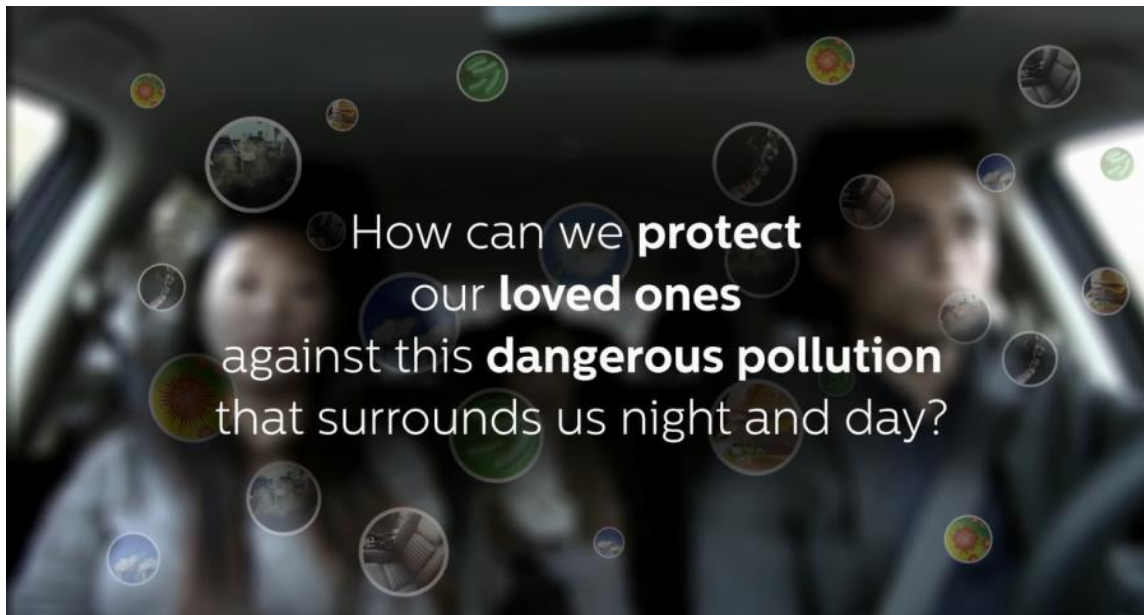
“Exposure to PM <2.5 µm in diameter (PM_{2.5}) over a few hours to weeks can trigger cardiovascular disease-related mortality and nonfatal events; longer-term exposure (eg, a few years) increases the risk for cardiovascular mortality to an even greater extent than exposures over a few days and reduces life expectancy within more highly exposed segments of the population by several months to a few years.”

Comparing size



**PM2.5
(2.5 microns)
leads to high
plaque deposits
in arteries, which
contribute to a
hardening of the
arteries. And that
can lead to heart
attacks and other
cardiovascular
problems.**

How to Protect your Loved Ones????



PM2.5 Cabin Air Filter:

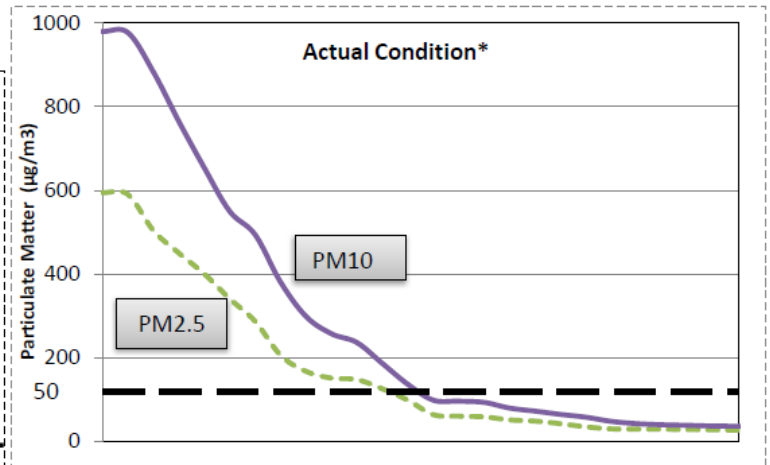
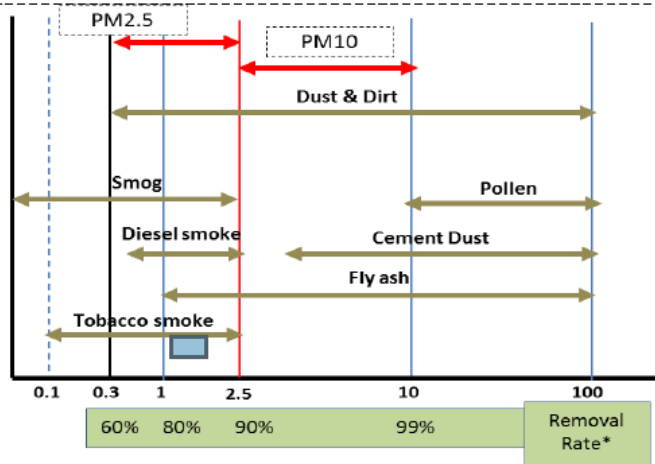


Product Features:

Dust Removal Efficiency

A filter that is made of high quality, electrostatic non woven fabric which removes PM 2.5 level particulates from the air.

● Removal of small particles*



* All data taken under standard test condition
Note : The removal rate varies with particle diameter

- Excellent dust removal. **Traps PM2.5 (~75%) air pollutants.**
- Help in Asthma, respiratory problems etc. by providing clean air.
- Rejuvenate the car cabin with clean air.

When to replace

The filter is composed of fibers, which block dust and particulates. When used over a long period of time, the filter will become clogged. High efficiency filter has more efficiency for very fine particles also, thus it is very sensitive towards the vehicle driving environment & condition. Replace the filter when following problems occur :

- Poor Ventilation
- Inefficient air conditioning
- Longer Time required to clear mist from windshield

Replacement Guideline

Every 10,000km or once a year, whichever comes first.

* The guideline may vary by environment condition, uses, region etc.

Applicable Models:

New Swift, New Dzire, New Ertiga, Baleno, XL6

Part Details are as follows:

S.No.	Part No	Part Name	Margin Cat	MRP (Rs.)
1	990J0M56RS0-010	PM2.5 Cabin Air Filter	C	590

Introductory dispatches are being made for awareness and display.
We are sure that our continuous product developments and improvements will help in providing the necessary growth impetus to the MSGA business through your involvement and support.

Happy Selling!

With Regards

TEAM ACCESSORIES